

※濃厚接触あり：  
保健所による認定があった場合やCOCOA通知（濃厚接触者の可能性は高くないとなった場合を除く）に基づき判断する。

★印のタイミングで必ず下記に連絡ください。  
 <専用メールアドレス> [pcrtteststudent@jim.titech.ac.jp](mailto:pcrtteststudent@jim.titech.ac.jp)  
 <指導教員> 研究室に所属している学生は、指導教員にも連絡してください。

登校再開の条件：  
 ・発症後（自覚症状なしの場合は、PCR検査実施日の後）に少なくとも10日が経過している  
 ・薬剤を服用していない状態で、解熱後および症状消失後に少なくとも72時間が経過している  
 ・療養場所からの退去・退院から1週間が経過している

\* 自覚症状も濃厚接触もないが、何らかの理由で自発的にPCR検査を受け、陽性となった場合は、登校再開の条件を全て満たした時点が登校再開の時期となる。  
 陰性の場合、登校に制限はない。

\* 新型コロナウイルス感染症に起因する公欠の取扱いについて [https://www.titech.ac.jp/kyoumu/procedure/pdf/procedure/gakumu\\_20201002-2.pdf](https://www.titech.ac.jp/kyoumu/procedure/pdf/procedure/gakumu_20201002-2.pdf)

# Summary of COVID-19 Guidance for Students

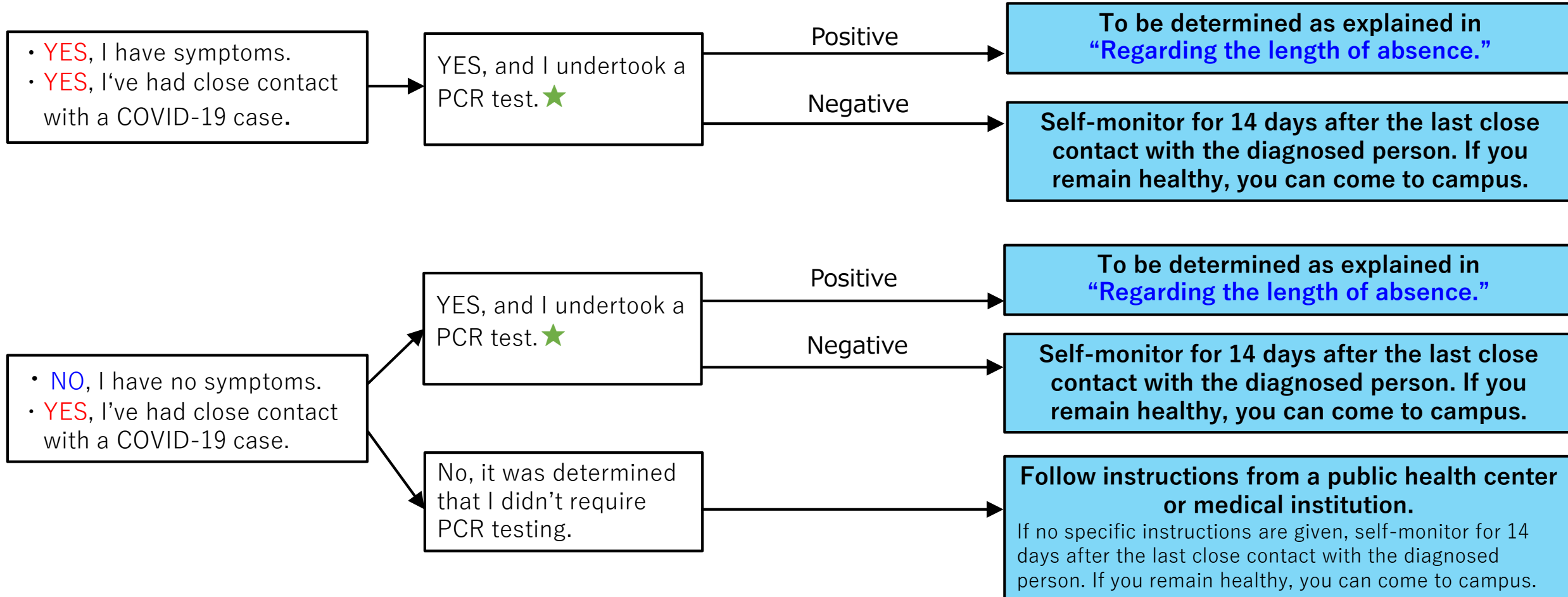
October 2, 2020

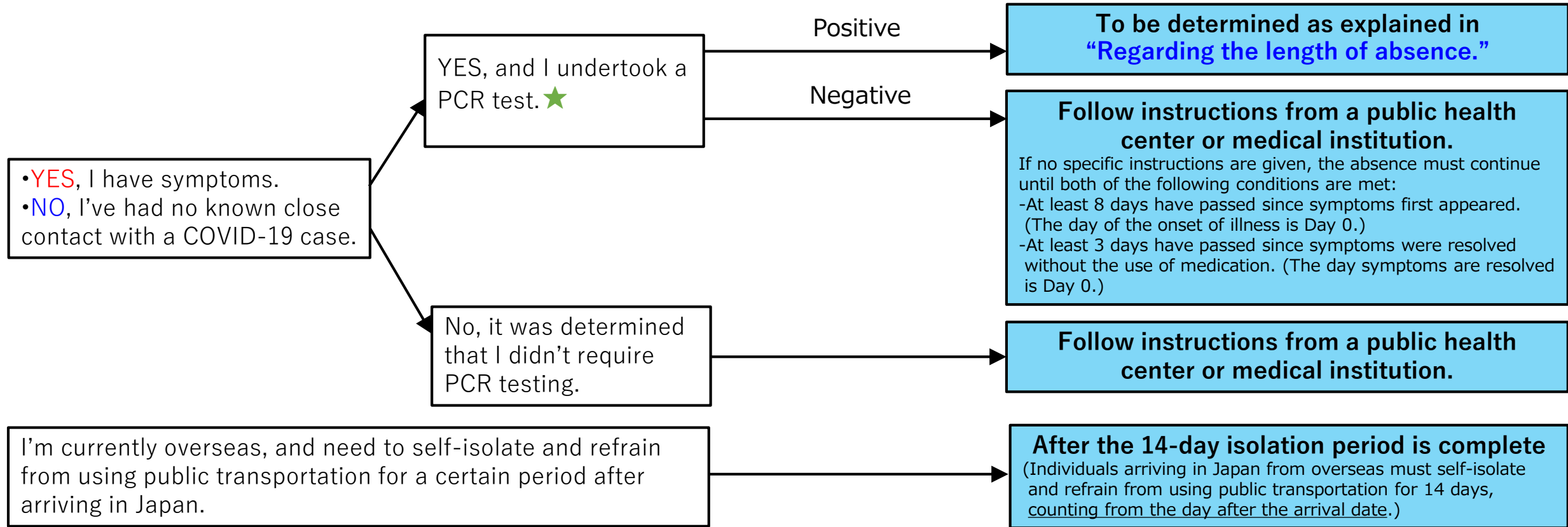
- Do you have symptoms associated with COVID-19?
- Have you been in close contact with someone diagnosed with COVID-19?

Did a public health center or medical institution determine that you require PCR testing?

Did you test negative or positive?

When you can come to campus?  
(Authorizes absences may be granted up until the conditions are met.)





A public health center will assess various factors and determine whether people have been in close contact with someone diagnosed with COVID-19. Even if individuals are notified of possible exposure by the COVID-19 Contact-Confirming Application (COCOA), there may be cases where it is not considered as a close contact.

★If a student is to undertake a PCR test, they must inform Tokyo Tech via email at [pcrteststudent@jim.titech.ac.jp](mailto:pcrteststudent@jim.titech.ac.jp), and notify its result as well. In addition, those affiliated with laboratories must contact their academic supervisors.

**Regarding the length of absence**  
The absence must continue until all the following conditions are satisfied:

- At least 10 days have passed since symptoms first appeared. (The day of the onset of illness is Day 0.) For asymptomatic cases, at least 10 days have passed since the PCR test. (The day of the PCR test is Day 0.)
- At least 3 days have passed since fever and other symptoms were resolved without the use of medications. (The day symptoms are resolved is Day 0.)
- One week has passed since discharge from hospital or isolation at a designated facility.

Notes:  
You may undertake a PCR test for certain reasons, regardless of whether you have symptoms or you have had close contact with someone diagnosed with COVID-19. If you undertake a test and receive a positive result, you are not permitted to come to campus until all the conditions stated in “Regarding the length of absence” are satisfied. Coming to campus is not restricted if the result is negative.  
Information regarding handling of authorized absences due to COVID-19 is available at the link below:  
[https://www.titech.ac.jp/kyoumu/procedure/pdf/procedure/gakumu\\_20201002-2.pdf](https://www.titech.ac.jp/kyoumu/procedure/pdf/procedure/gakumu_20201002-2.pdf)